

Large Intercom System 32, 64 Lines

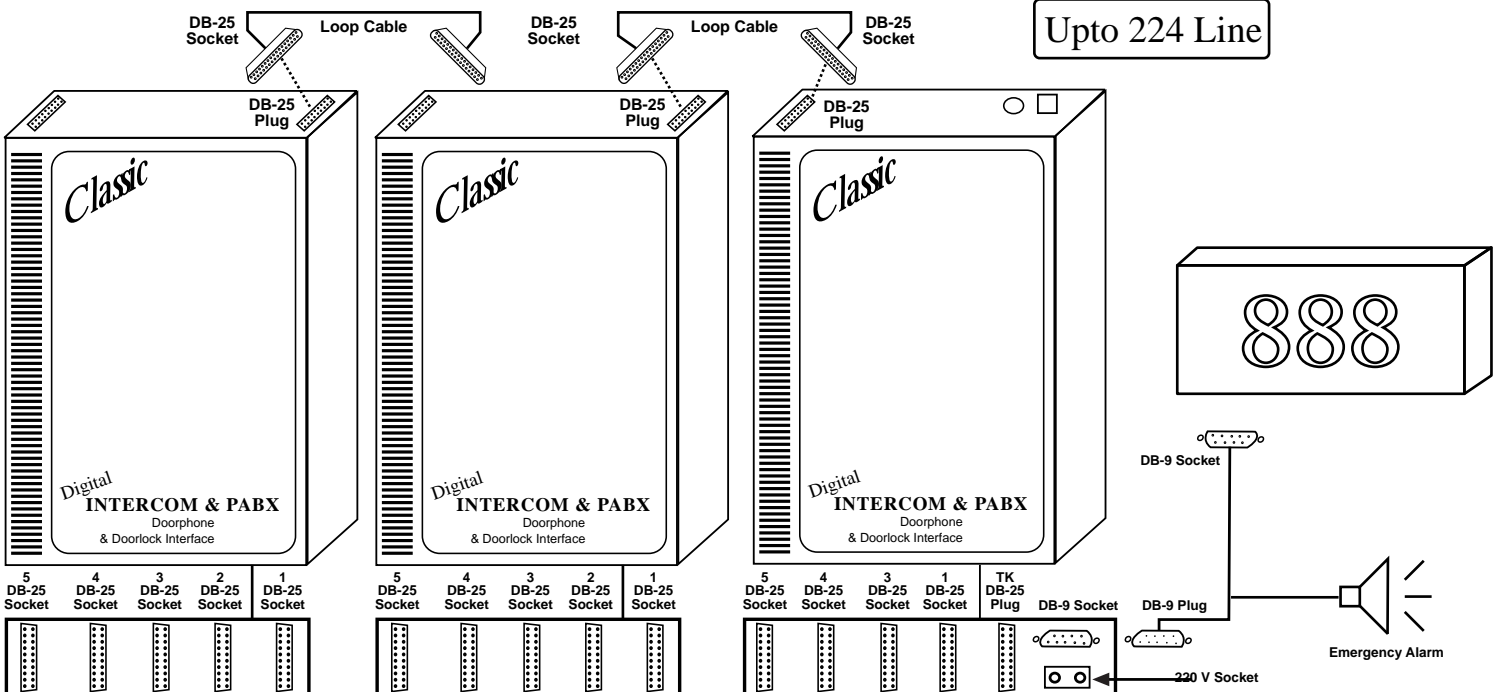
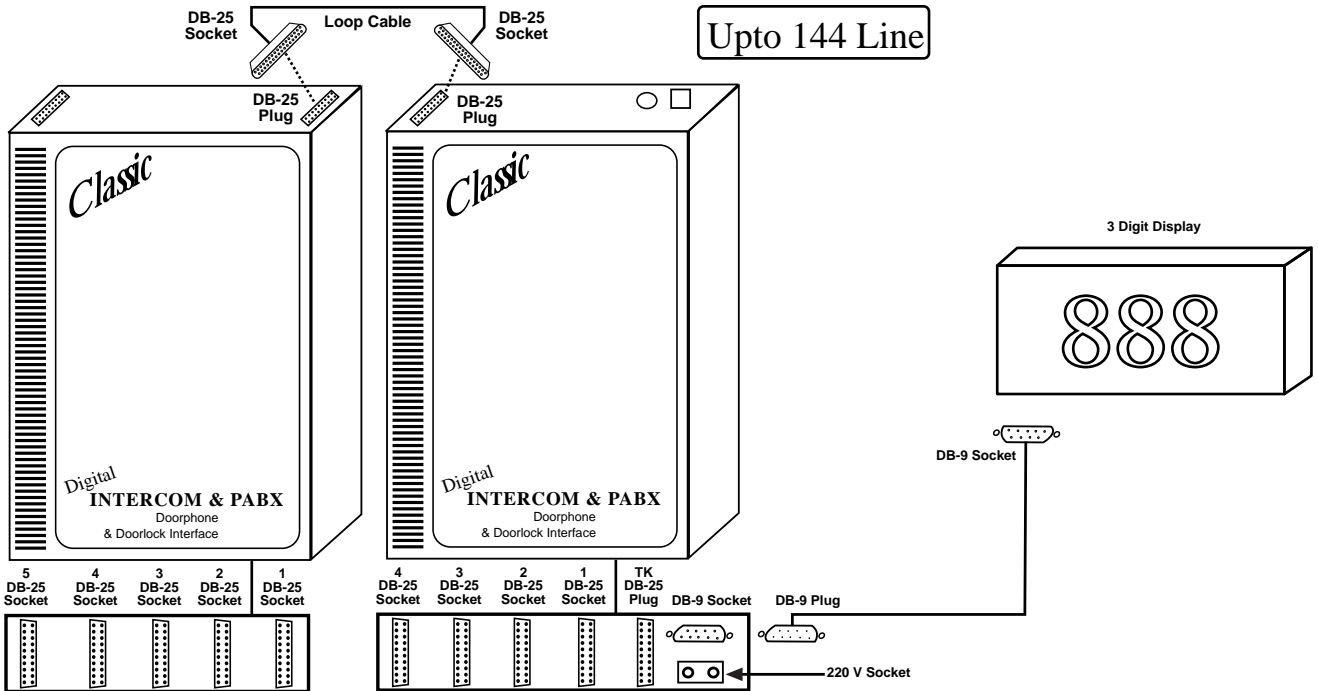
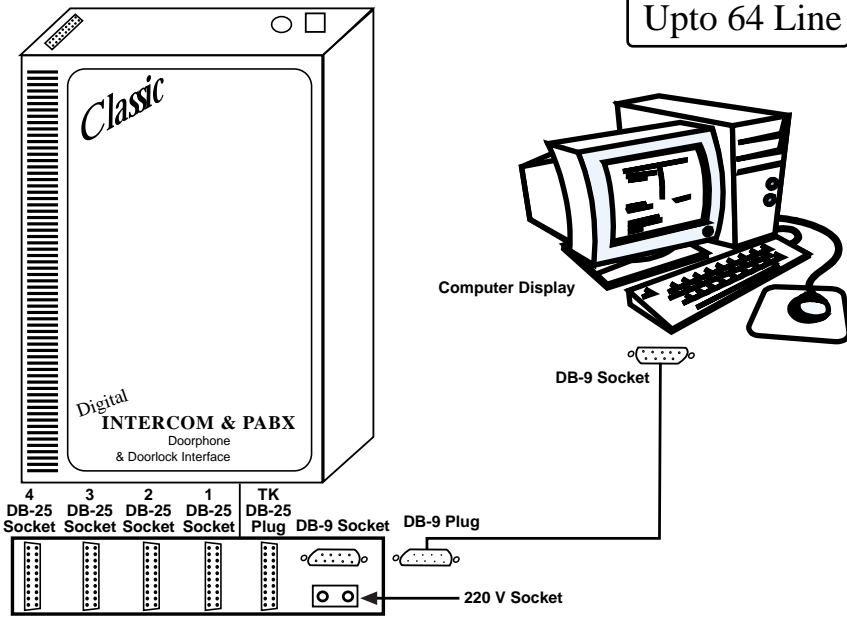
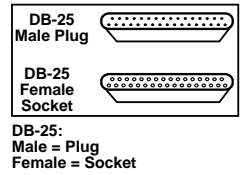
Feature Enable Details

1	<i>Total Subscriber</i>	<input type="text"/>
2	<i>Operator</i>	<input type="text"/>
3	<i>3-Digit Display</i>	<input type="text"/>
4	<i>Dialing Mode</i>	<input type="checkbox"/> Pulse <input type="checkbox"/> Tone
5	<i>Communication Mode</i>	<input type="checkbox"/> Only Sub. to Opr. <input type="checkbox"/> All Open <input type="checkbox"/> Grouping
6	<i>Operator Calling Mode</i>	<input type="checkbox"/> Seperate 91,92,.....96 <input type="checkbox"/> Hunting / Jumping
7	<i>Operator Calling Number</i>	<input type="checkbox"/> Standard 9,91,92.....96 <input type="checkbox"/> Special _____
8	<i>Emergency Alarm Module</i>	<input type="text"/>

Package Include

S.NO.	DESCRIPTION	QTY
01	Main Unit	
02	Power Cord	
03	Data Cable (Extension)	
04	Loop Cable	
05	3 - Digit Display	
06	Emergency Alarm	
	DOCUMENTS:	
07	Broucher	
08	Extension Cable Details	
09	Mounting Hole Tempelete	
10	System Layout Diagram	
11	Operating Code	

Large Intercom System Diagram



Digital Intercom CABLE DETAIL

DB26 Plug Pin No.

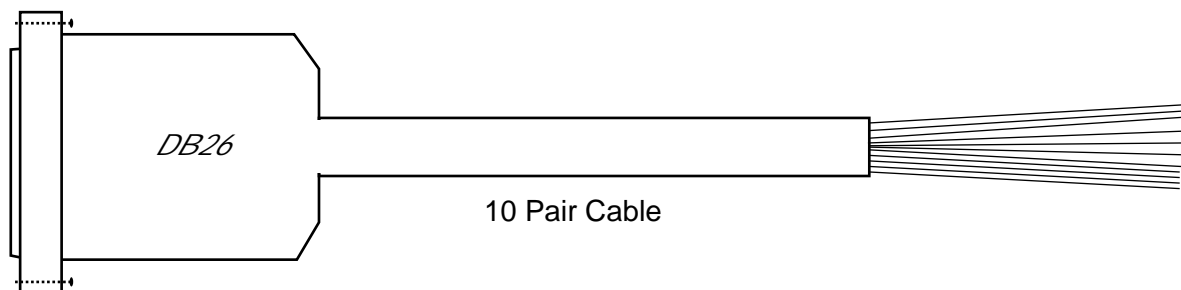
Wire Color Code

Lines No.

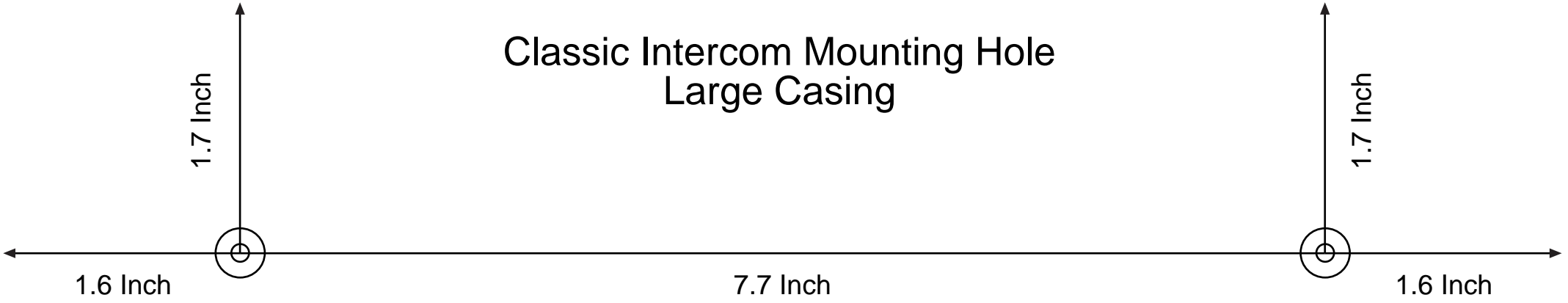
1	→	Dark Blue	→	Operator	→	1
2	→	Light Blue	→	Operator	→	2
3	→	Dark Orange	→		→	3
4	→	Light Orange	→		→	4
5	→	Dark Brown	→		→	5
6	→	Light Brown	→		→	6
7	→	Dark Gray	→		→	7
8	→	Light Gray	→		→	8
9	→	Dark Red	→		→	9
10	→	Light Pink	→		→	10
11	→	Dark Yellow	→		→	11
12	→	Light Yellow	→		→	12
13	→	Dark Voilet	→		→	13
14	→	Light Voilet	→		→	14
15	→	White	→		→	15
16	→	Black	→		→	16
17	→	Green	→	● ● ● ●	Common	
18	→	Green	Common			
19	→	Green	Common			
20	→	Green	Common			

Note:

All Shades of Green Colour are Common.



Classic Intercom Mounting Hole
Large Casing



Classic Intercom Mounting Hole
Large Casing

